

Surface Essentials



Mats & Membranes



DOOR MAT

STRIPE MAT01
STARRY MAT02
TOTEM MAT03
LOGO MAT04
CHEVRON MAT05
BERBER MAT06
WAFFLE MAT07

SAFETY MAT

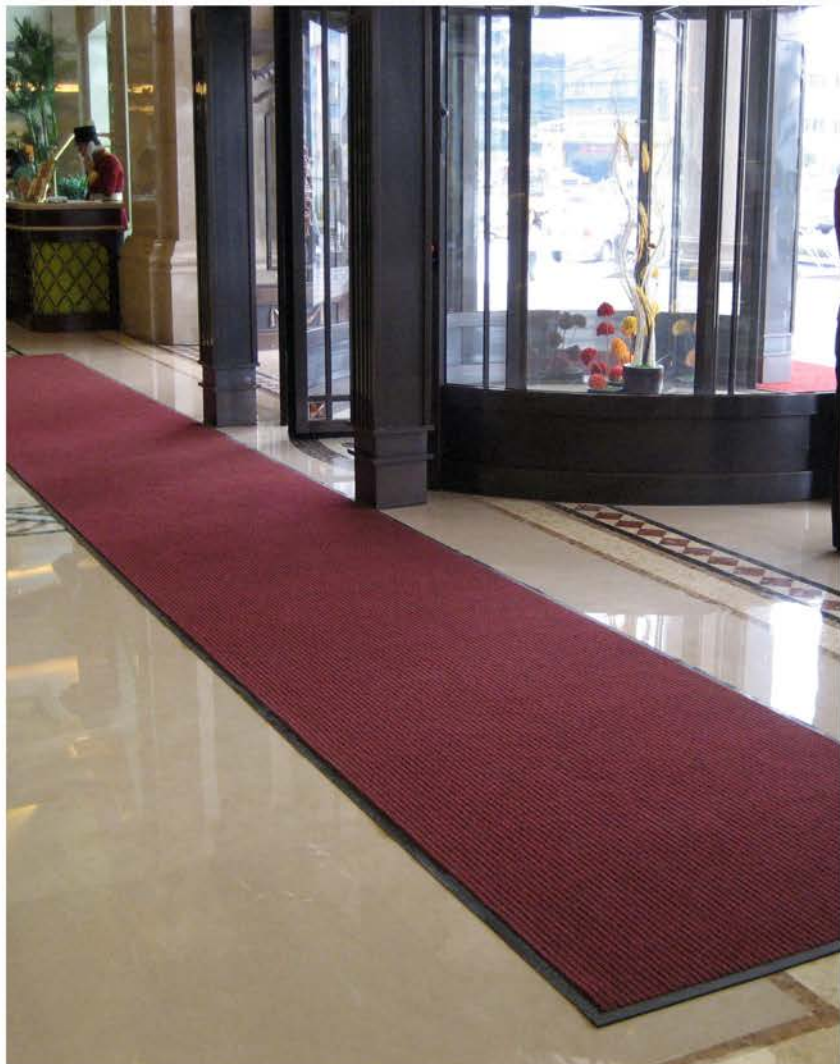
MULTI-PURPOSE MAT08
ANTI-SLIP SAFETY MAT09
CROSS MAT10
ZIG ZAG MAT11

MEMBRANE

SHOWER PAN LINER12
FLOOR PROTECT13
ROOF&TUNNEL	
WATERPROOF	
MEMBRANE14
ARTIFICIAL POND15

CONTACT US

.....16



STRIPE MAT



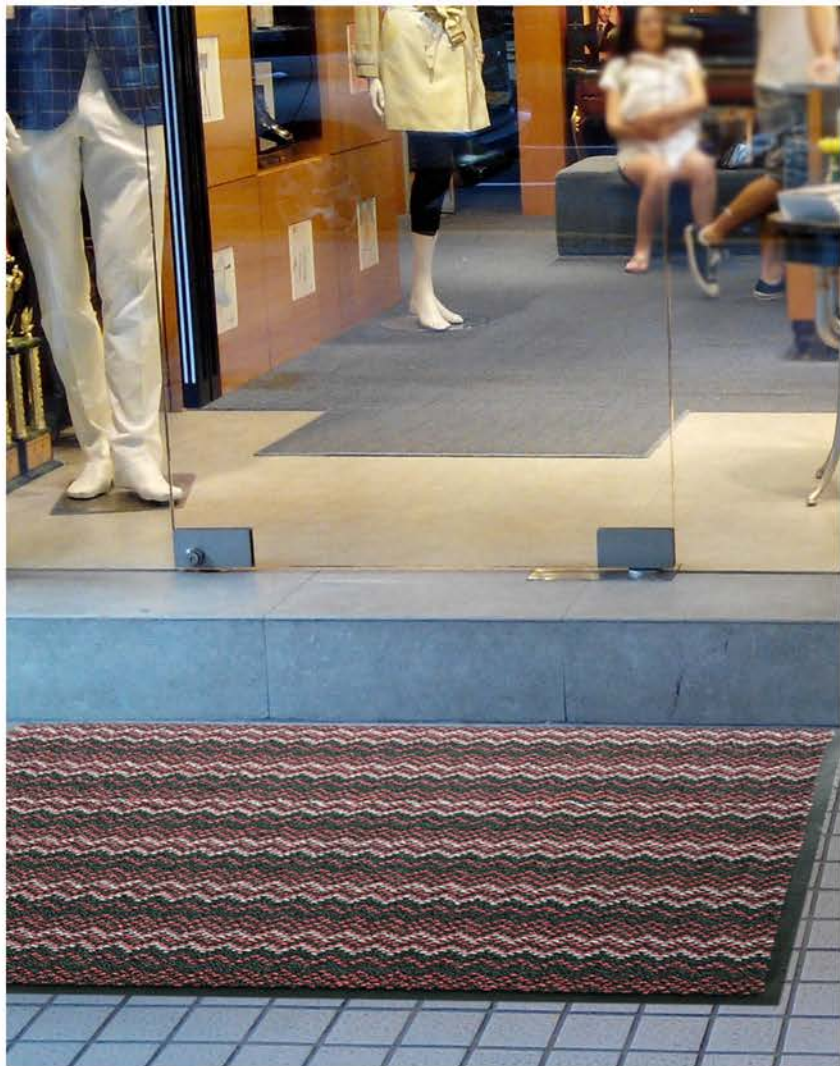
Pile Material	PP + PET
Backing	PVC
Weight	3.6 ± 0.5 kg/m ² (Mats) ; 3.2 ± 0.17 kg/m ² (Rolls)
Thickness	9.0 ± 1.0 mm
Mats(cm)	45X60, 45X75, 60X90, 90X120, 90X150, 120X180
Rolls(cm)	90X1200, 90X1800, 120X1200, 120X1800, 180X1800



STARRY MAT



Pile Material	PP + Nylon
Backing	PVC
Weight	$3.75 \pm 0.4 \text{ kg/m}^2$
Thickness	$7.0 \pm 1.5 \text{ mm}$
Mats(cm)	45X60, 45X75, 60X90, 90X120, 90X150, 120X180
Rolls(cm)	90X1200, 90X1800, 120X1800, 180X1800



TOTEM MAT



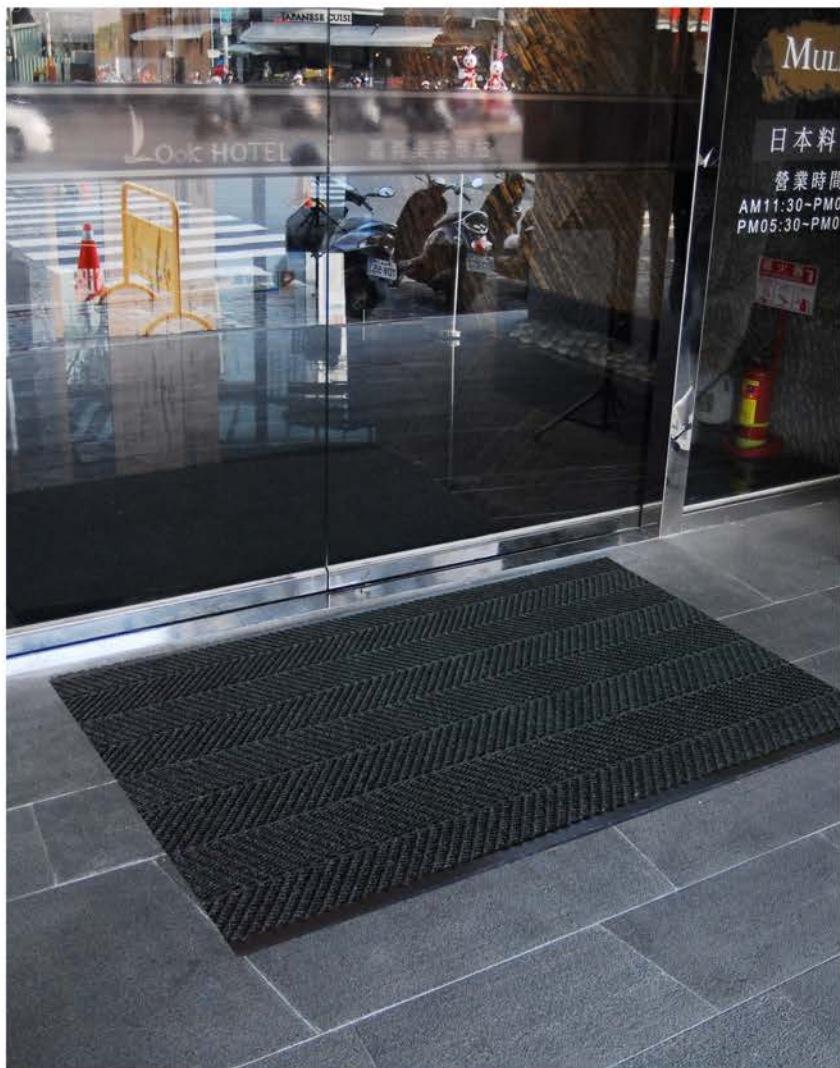
Pile Material	PP + Nylon
Backing	PVC
Weight	$3.5 \pm 0.4 \text{ kg/m}^2$
Thickness	$7.0 \pm 1.5 \text{ mm}$
Mats(cm)	45X60, 45X75, 60X90, 90X120, 90X150, 120X180
Rolls(cm)	90X1200, 90X1800, 120X1800, 180X1800
Color	Red, Grey



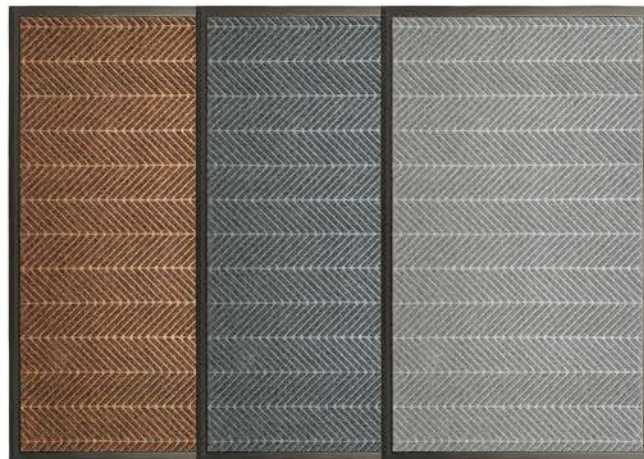
LOGO MAT



Pile Material	Nylon or Nonwoven Fabric
Backing	Rubber or PVC
Weight	$2.43 \pm 1.2 \text{ kg/m}^2$
Thickness	$8.5 \pm 0.5 \text{ mm}$
Mats(cm)	Available in any size(max width:180 cm, length:no limit)



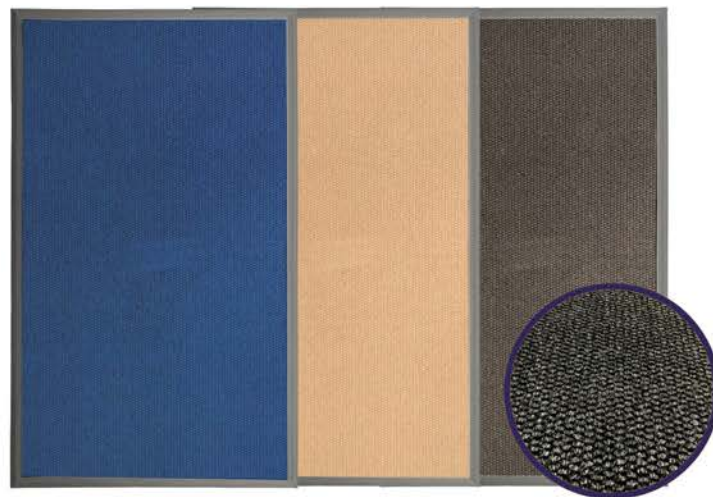
CHEVRON MAT



Pile Material	PP + PET
Backing	Rubber or PVC
Weight	4.1 ± 0.2 kg/m ²
Thickness	9.0 ± 1.0 mm
Mats(cm)	90X120, 90X150, 120X180
Rolls(cm)	200X1800
Color	Brown, Grey, Black/Grey, Black/Red



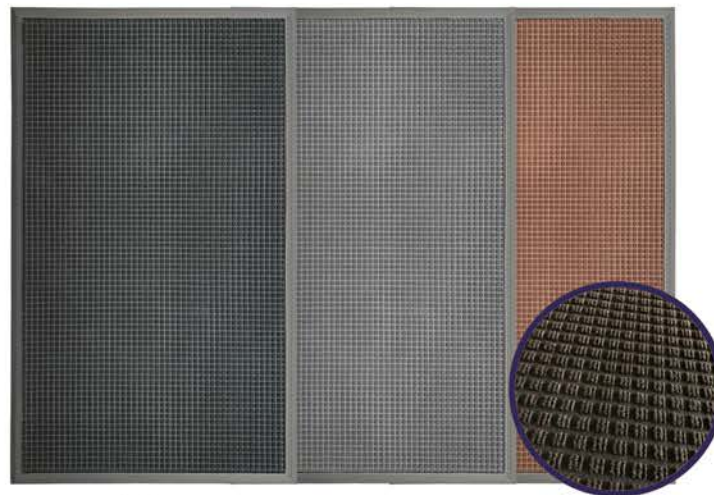
BERBER MAT



Pile Material	PET
Backing	Rubber or PVC
Weight	4.0 ± 0.2 kg/m ²
Thickness	9.0 ± 1.0 mm
Mats(cm)	90X120, 90X150, 120X180
Rolls(cm)	120X1800, 160X1800, 200X1800
Color	Brown, Blue, Black/Grey



WAFFLE MAT



Pile Material	PET
Backing	Rubber or PVC
Weight	$3.5 \pm 0.2 \text{ kg/m}^2$
Thickness	$7.0 \pm 1.0 \text{ mm}$
Mats(cm)	90X120, 90X150, 120X180
Rolls(cm)	120X1500, 160X1500, 200X1500
Color	Brown, Black/Grey, Black/Red, Black



MULTI-PURPOSE MAT



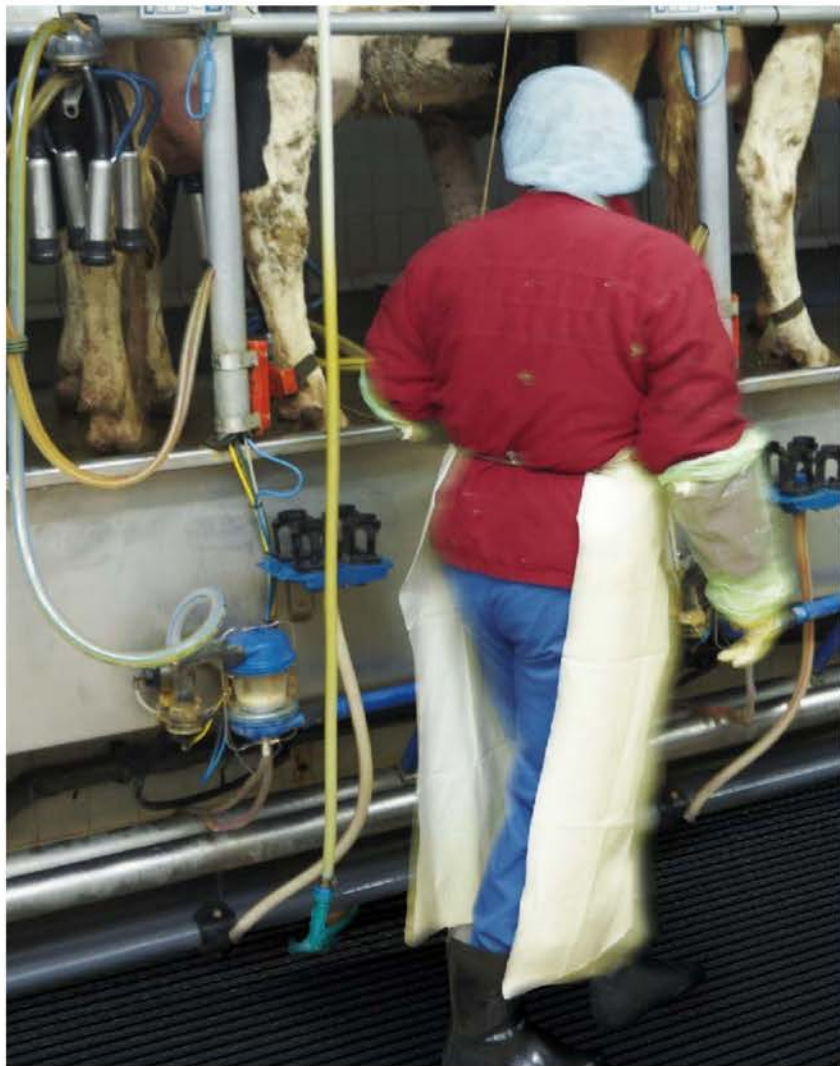
Material	Depends on a carpet use
Backing	PVC
Weight	$4.1 \pm 0.33 \text{ kg/m}^2$
Thickness	$9.3 \pm 0.7 \text{ mm}$
Rolls (cm)	90X150



ANTI-SLIP SAFETY MAT



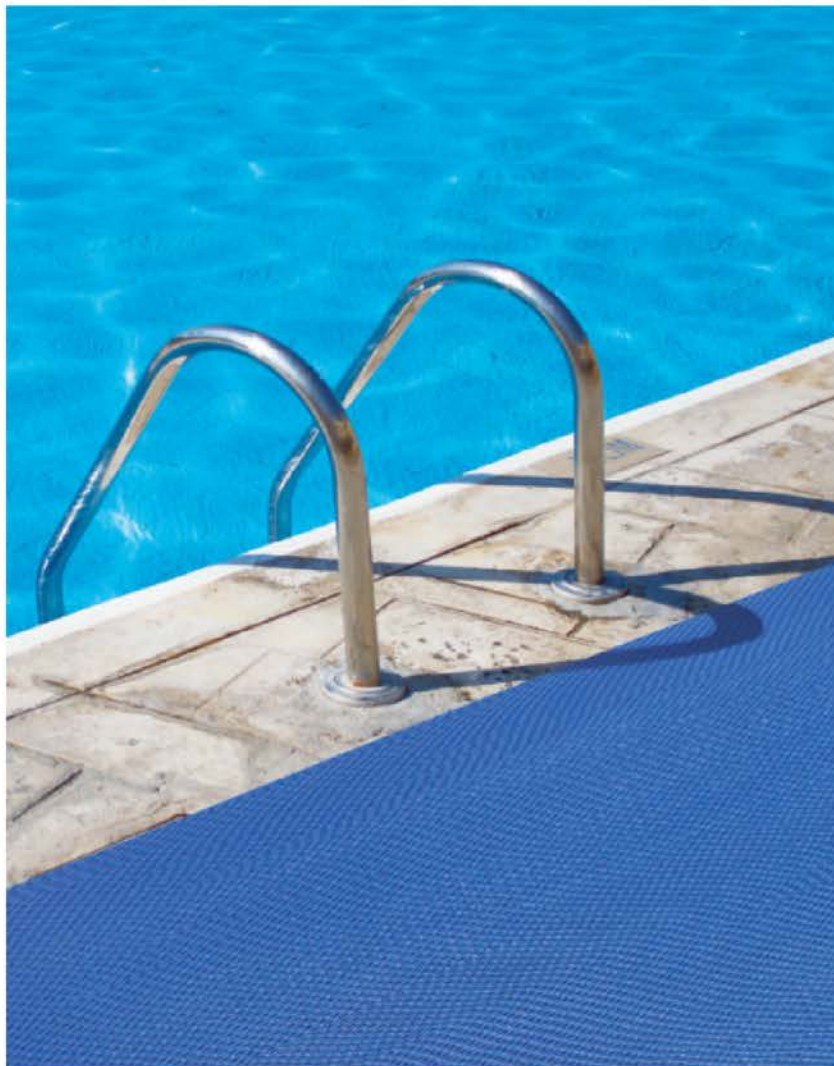
Material	Mineral Coating
Backing	PVC
Weight	$2.6 \pm 0.15 \text{ kg/m}^2$
Thickness	$2.25 \pm 0.2 \text{ mm}$
Per Bar (cm)	90X600, 90X1200, 90X1800



CROSS MAT



Material	PVC
Type	Wide RG, Narrow RG, Wide HD
Weight	Wide RG/HD - $6.8 \pm 0.4 \text{ kg/m}^2$ Narrow RG - $8.1 \pm 0.5 \text{ kg/m}^2$
Thickness	Wide/Narrow RG - $12 \pm 1.0 \text{ mm}$ Wide HD - $13.5 \pm 1.0 \text{ mm}$
Rolls(cm)	60X600, 60X1000, 90X600, 90X1000, 120X600, 120X1000
Color	Black, Grey, Blue, Red



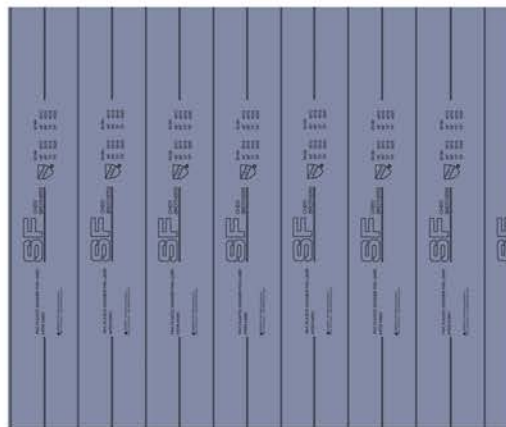
ZIG ZAG MAT



Material	PVC
Weight	$5.0 \pm 0.5 \text{ kg/m}^2$
Thickness	$8.5 \pm 0.5 \text{ mm}$
Mats(cm)	90X600, 90X1200,
Color	Brown, Grey, Blue, Red, Green



SHOWER PAN LINER



Material	PVC
Density	1.3 ± 2% kg/m ²
Thickness	30 mil, 40 mil
Width(ft)	4, 5, 6, 6.6
Length(ft)	According to customer requirements
Features	Meets ASTM D-4551 IAPMO listed Every 6 inches mark



FLOOR PROTECT



Material	PVC
Density	$1.3 \pm 2\% \text{ kg/m}^2$
Thickness	3mm, 4mm, 5mm, 6mm





ROOF & TUNNEL WATERPROOF MEMBRANE



Material	PVC, TPO
Thickness	1.0/1.5/2.0 mm
Width	2.0 m
Length	15-25 m/roll
Spec.	Single layer, Double layer, Reinforcement
Color	Black, White



ARTIFICIAL POND



Material	OBC
Thickness	1.0-4.0 mm
Width	2.0 m
Length	15-30 m/roll
Spec.	Single layer, Double layer,
Color	Black, Blue

Contact Us



SINGFORM ENTERPRISE CO., LTD

新豐企業股份有限公司

No. 152-300, Dakanglang, Puzi City,
Chiayi County 613013, Taiwan (R.O.C.)

TEL +886-5-3797-622

FAX +886-5-3700-405

www.sfcb.com.tw

singform@sf68.com.tw

SUZHOU XINFENG COMPOSITE FIBER PRODUCTS CO., LTD

蘇州新豐複合纖維制品有限公司

No. 11 Fada Road, Development Area,
Taicang City, Suzhou City, Jiangsu
215413, China

TEL +86-512-5344-1030

FAX +86-512-5344-1007







For more information check our catalog at www.sfc.com.tw