



2022
Car mat catalog

SF
CHEN
BROTHERS

ABOUT US

International top car mat (OEM/ODM) professional manufacturer

Professional

Since its establishment in 1987, Singform has been serving global automobile company for more than half a century. We have an experienced R&D technical team and a high-efficiency management department.



Global

Singform Taiwan headquarters mainly produces plastic pellets, original car mats, commercial floor mats, waterproof membranes, PVC waterstops and other related products. It is also a research and development and experimental center.



Energy

In order to provide a more comprehensive product line service, we set up a branch in Suzhou, China. In addition to the main production of car mats, a rubber production line is specially established to manufacture rubber floor mats related products. Combined with China's manufacturing energy, diversification and expansion of production lines can better meet the needs of customers.



New factory in Taiwan

HISTORY

Brand story

History

- 1987 Established in Chiayi, Taiwan
- 1993 Established the first car mat production line
- 1995 Started production of OEM car mats for Nissan, Mazda, Toyota, Ford and Mitsubishi in Taiwan
- 1998 Established PVC floor mat production line
- 2000 Established Chinese factory-Suzhou Xinfeng
- 2004 North American Ford Supply Mat (Suzhou XF)
- 2005 Passed TS-16949 certification
- 2006 Ford Q1 System Certification (Suzhou Factory)
- 2009 Ford Q1 system certification (Taiwan factory)
- 2015 Mass production of waterproof membrane production line
- 2018 Construction of Wanping Plant in Mahou
- 2019 Mahouhou plant joins manufacturing



Partners



NISSAN

SUZUKI

TOYOTA

HONDA



DAIHATSU



MAZDA

VOLVO

PORSCHE



SSANGYONG



MITSUBISHI MOTORS



LABORABILITY

R&D capability
Product diversity

Abundant R&D energy



Quality control



Zero Pollution Policy



/All Weather Car Mat

Specification

Material	TPE/TPO/TPR
Color	Black/Customized



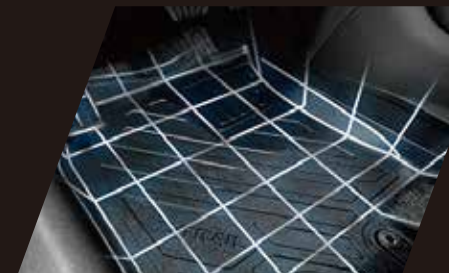
Full protection

Prevent the intrusion of sludge, rainwater and pollutants, and efficiently guard the car carpet



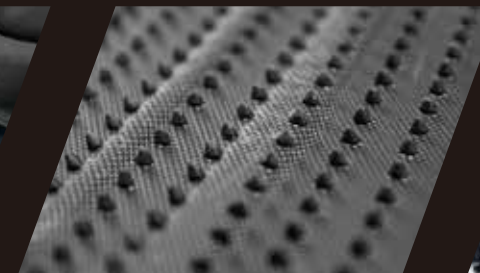
Easy to clean

Use clean water to easily clean the surface dust, stubborn dirt can be removed by gently brushing, greatly reducing maintenance costs



Fit the model

Use a 3D laser scanner to create high-precision design drawings, so that the finished product is highly consistent with the model



Exclusive nail bottom

The world's exclusive nail bottom design, the anti-slip function has been further evolved (some models do not have this design)



ECO friendly

Manufacturing raw materials can be completely recycled and reused, and all of them have undergone rigorous testing, non-toxic and environmentally friendly materials



HONDA CR-V



TOYOTA COROLLA CROSS



Ford F-150



NISSAN X-TRAIL

/Carpet car mat

Specification

Material	PP/PET/other
Color	Customized

Classic design

Original designation, classic taste, timeless design, fine workmanship

Match model

More than 30 years of measurement and design experience, a database of more than 1,000 design drawings, in line with various generations of cars

Various materials

Carpet material selection from various suppliers in Taiwan and around the world to provide customers with the most suitable car mat design

Safe anti-slip

A variety of anti-skid bottoms, which can cope with different carpet materials in the car, and ensure the safety of car owners

Quality control

All finished products will undergo strict quality control and meet inspection standards, such as flame-proof, wear-resistant, heavy metal and other tests



PORSCHE



Ford FOCUS



NISSAN SENTRA



Universal

/Injection molding car mat

Specification

Material PVC/TPE/TPO

Color Black/Grey/Customized



Raw material

Allocation of raw materials according to customer needs, so that the physical properties of finished products exceed expectations



Fit and anti-slip

Moderately soft and hard, high-precision design, perfect fit for the model, with anti-slip bottom, safe driving



Durable / Dustproof

Special waterproof, non-slip, wear-resistant surface treatment, foreign pollutants are not easily contaminated, all-weather durable



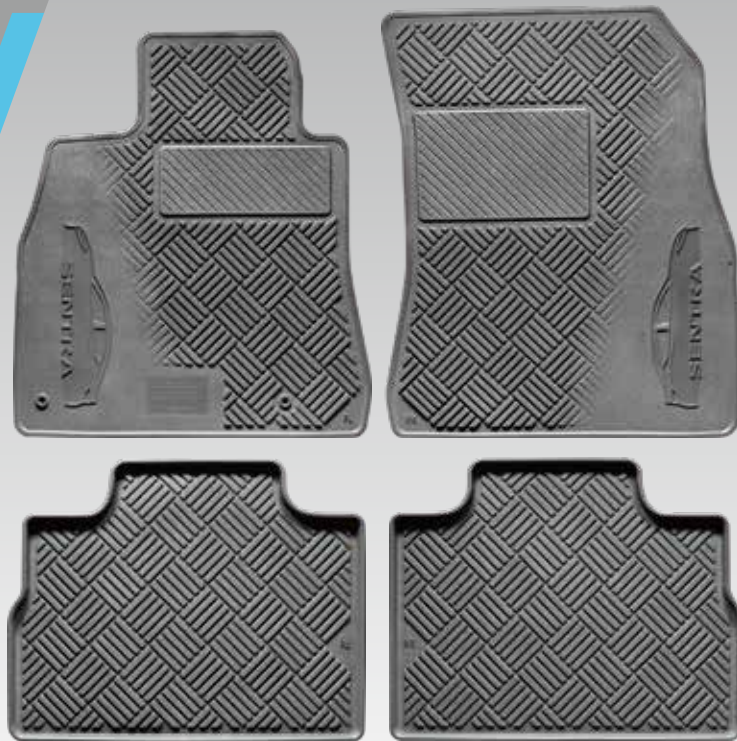
Easy to maintain

Easy to install and clean, and considerate high-side design to prevent spills from polluting the interior of the car

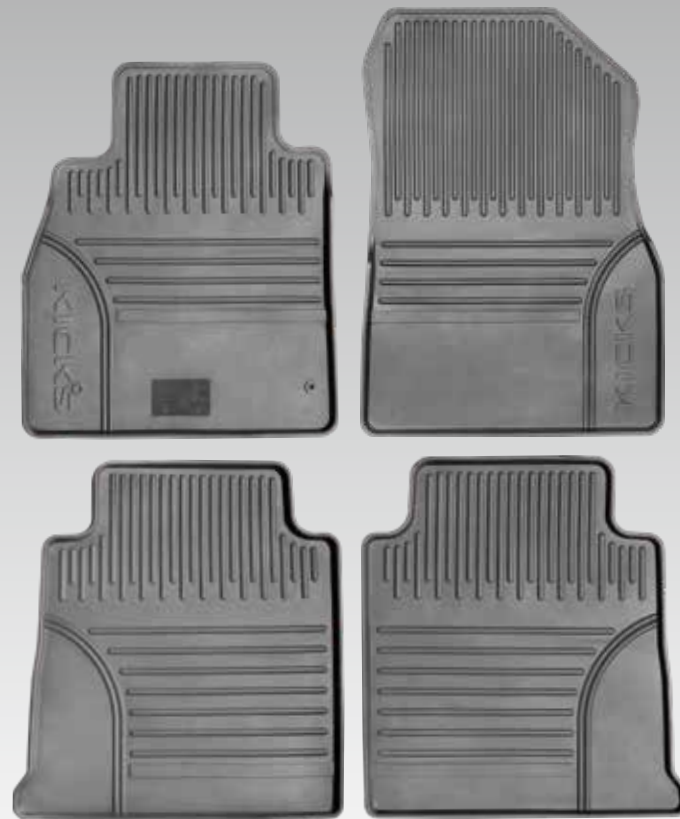


Safe and nontoxic

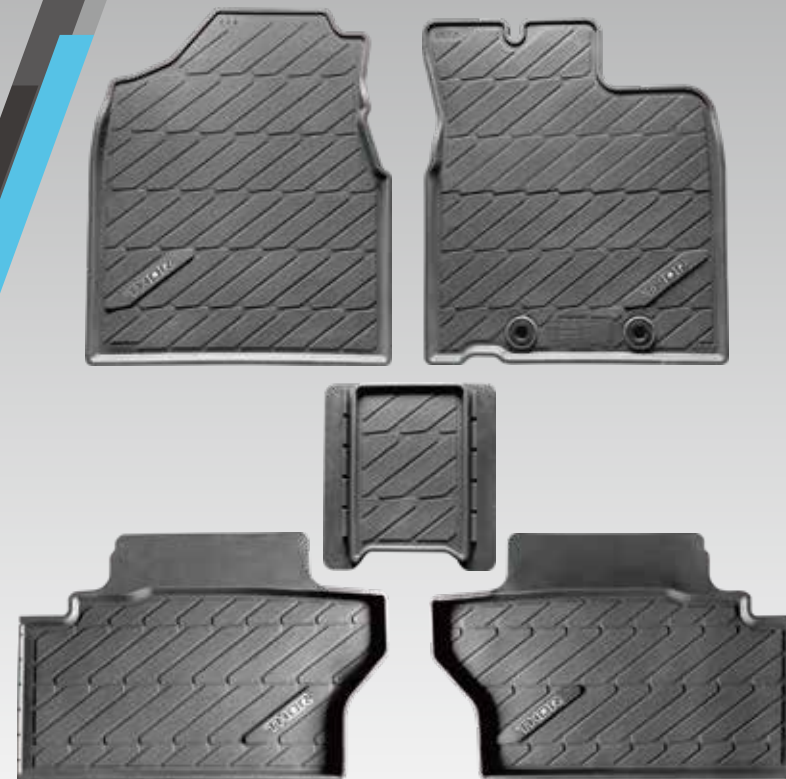
Quality inspections are carried out before and after leaving the factory, and they all meet the original standards, non-toxic and flame-proof, and safe to use



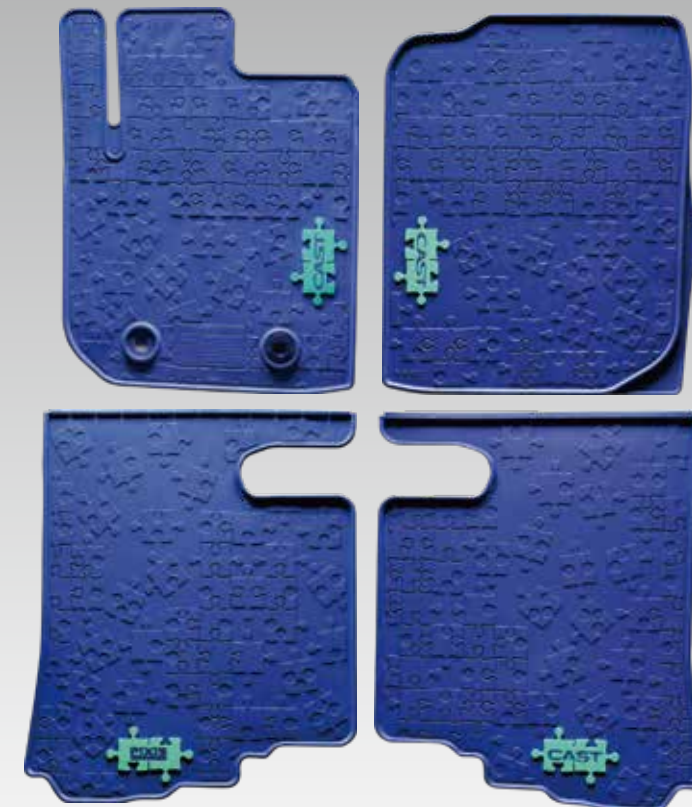
NISSAN SENTRA



NISSAN KICKS



NISSAN DAIHATSU



Universal



Car bed cover mat

SPEC Customized

Composite material, thick and durable, the folding is smooth and not stuck



Heavy duty mAT

SPEC PVC/TPO/OBC

For commercial vehicle use, thick and wear-resistant, oil-resistant, acid-resistant, and easy-to-install



Other car pads

SPEC Customized

Can be customized, all have safety anti-slip design, all ages can ride with peace of mind



Truck mat

SPEC Customized

Three-dimensional high side, waterproof and anti-fouling, wear-resistant and easy to clean, lightweight material, strong and durable

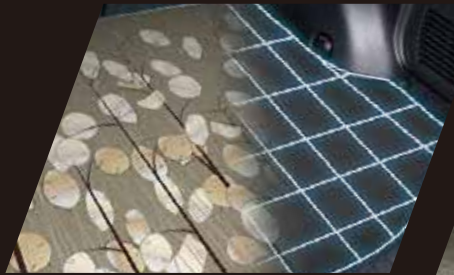
/Printed universal truck mat

Specification	
Material	Customized
Color	Customized



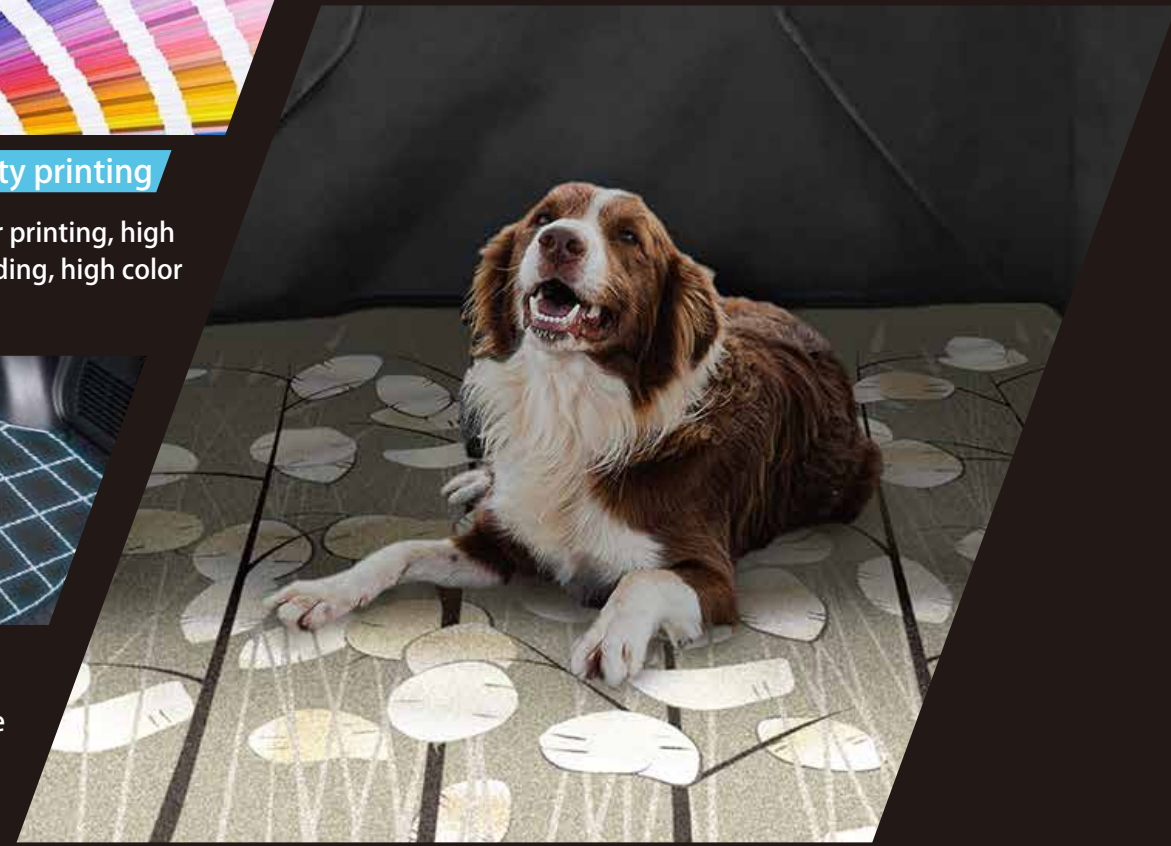
High-quality printing

Optimal ink color printing, high coloration, no fading, high color reproduction



All-round fit

High-grade carpet use, accurate measurement of the original car, soft and compliant without warping



Multiple uses

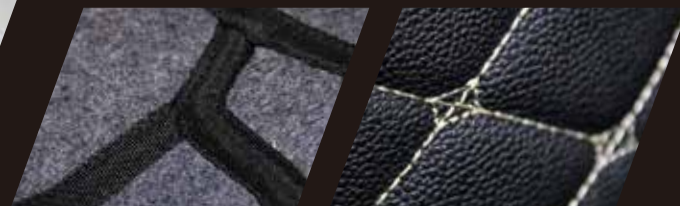
/PU leather series

/Saddle bag inner liner



Harley uses

Multi-brand specified accessories, OEM/ODM multi-functional design customization



Anti-slip bottom

Fine stitching



BMW uses

/Motorcycle interior liner



Vespa uses

Prevents the influence of engine heat, and the functional inner pocket can hold small items



Heat insulation

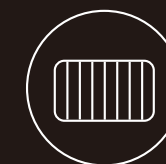
Functional inner pocket



3D



Custom



Non-slip



Safety



Guarantee



Premium



The latest design, a variety of accessories, safe anti-slip bottom, fully surrounded to protect the car carpet, waterproof, anti-fouling and easy to clean

/Other Accessories



Truck protection mats

The first step in the rear compartment protection from heavy or sharp objects



Universal use

Large-area design, common to multiple models, cost-effective products



Pet mat

Waterproof, stain-resistant, easy to clean, soft and easy to store



Multipurpose use

- Picnic Mat
- Anti-fouling pad
- Storage bag



Precise design

Precise measurement and tailoring, high fit



Heat insulation, sun protection, non-toxic and tasteless



Non-reflective, maintain clear vision



Non-slip bottom, no glue needed, easy to install

Dash cover





Singform Enterprise Co., Ltd.

Taiwan Headquarters

Address :

No. 152-300, Dakanglang, Puzi City, Chiayi County
613013, Taiwan

TEL : +886-5-3797-622

FAX : +886-5-3700-405

Official website : www.sfc.com.tw

Suzhou Xinfeng Composite Fiber Products Co., Ltd

Address :

No. 11 Fada Road, Development Area, Taicang City,
Suzhou City, Jiangsu 215413, China

TEL : +86-512-5344-1030

FAX : +86-512-5344-1007

SingForm Enterprise Co.,Ltd. (Factory)

TEL : +886-5-3623-886

Address :

No. 21, Machouhouyuanqu 2nd Rd., Lucao Township,
Chiayi County 611001, Taiwan

